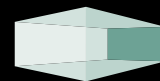




DUTURO®

DUTURO® is a tough, hard-wearing marble and acrylic architectural coating. Designed for spray application, and suitable for both interior and exterior use, DUTURO® creates a durable textured stone-like finish. It is ideally suited to corridors and high traffic areas where good aesthetics, value and durability are the key requirements. Our new formulation, incorporating a high content of recycled marble, responds to market requirements for finishes eligible for environmental building programs – such as USGBC LEED®.

- A water-based, acrylic wall coating designed for large commercial spray applications.
- New formulation DUTURO® contains 45% pre-consumer recycled marble, qualifying for inclusion within LEED 'Materials and Resources' 4.1.
- Provides a seamless, durable, cleanable, hardwearing and low maintenance wall finish.
- Low VOCs (Volatile Organic Compounds) – 62g/l.
- Formaldehyde free
- Formulated to prevent mold, mildew and bacterial growth (including MRSA, E.Coli and Salmonella)
- Tough and hard-wearing - achieves over 3,000 wet scrub cycles
- New color palette – 24 stone-like colors
- Decorative effects can be easily achieved by masking, overlaying and combining different colors and textures.
- Designed for spray application, can be roller-applied
- 10 year material warranty for internal use
- Coverage rate: 0.09-0.11 kg/sq feet (one coat application)



ARMOURCOAT®
SURFACE FINISHES

Armourcoat Surface Finishes Inc.
4330 Production Court, Las Vegas, NV 89115
Telephone: (702) 644-0601
Fax: (702) 644-0554
Skype: armourcoatusa
Email: sales@usa.armourcoat.com:

www.usa.armourcoat.com



DT-D347



DT-D348



DT-D349



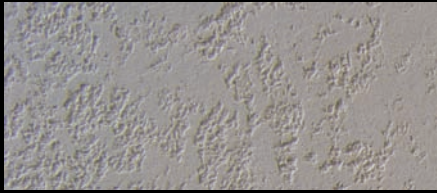
DT-D350



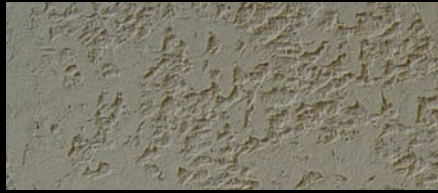
DT-D351



DT-D352



DT-D353



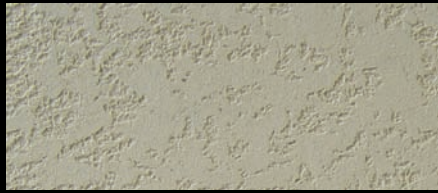
DT-D354



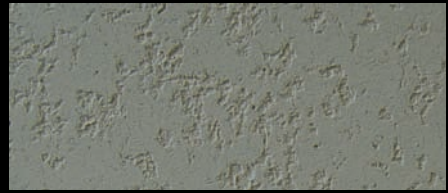
DT-D355



DT-D356



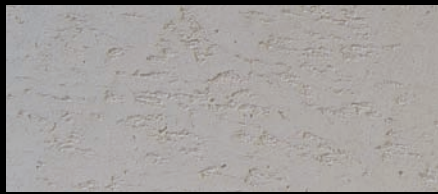
DT-D357



DT-D358



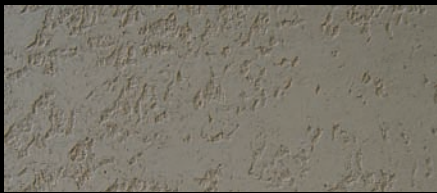
DT-D359



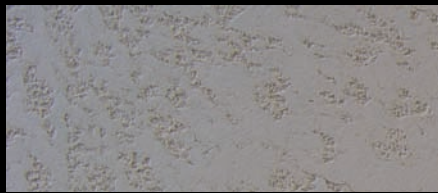
DT-D360



DT-D361



DT-D362



DT-D363



DT-D364



DT-D365



DT-D366



DT-D367



DT-D368



DT-D369



DT-D370